

# Benedict Canyon

Spring/Summer 2004

Benedict Canyon Association Newsletter

Volume V Issue 7

## A HOUSE THAT'S NOT A HOME

*By Susan Moses and Geoff Miller*

**H**ave you ever driven down Benedict Canyon and noticed a rather curious two-story Mediterranean-styled house on the southwest corner at Chevy Chase? Who occupies this structure and why does it remain so dignified and aloof from its surroundings? It appears, somewhat incongruously, to be a house that is not a home. Actually, it's the Beverly Hills Women's Club.

Two years after Beverly Hills was incorporated as a city, in December of 1916, a handful of spirited women met at the home of Mrs. Lowell C. Frost and officially formed the infant city's first Women's Club. The purpose was to create a place where strangers in this little community might have the opportunity to meet for social service and contacts. Its credo: The objects of this Club shall be the advancement in all lines of general culture; the opportunity of social service; and the up building of a community spirit in the City of

Beverly Hills. This sense of community spirit and commitment was made apparent when the United



States entered World War I and the club became an immediate Red Cross unit.

Mrs. Force Parker was the club's first acting chair and

remained in office until 1919, the year in which the constitution and by-laws were drafted, and the club was officially chartered. Mrs. Edmund Locke (Elizabeth Carr Locke) was the first elected president of the club, which quickly became an integral part of the Beverly Hills community, (population 674).

Mrs. Jay B. Millard (Elizabeth Mills Millard), who resided at 802 N. Crescent Drive, became president two years later. Meetings were generally held at the members' homes, but under Mrs. Millard's leadership the desire for a club home was crystallized. From 1922 to 1925, the women collected more than \$6,700 in proceeds from benefits. Along with donations from the club's 69 members adding to another \$4,000, they were able to buy three lots at the southwest corner of Benedict Canyon and Chevy Chase Drives for \$15,000—not an inconsiderable sum in those days. A

*Cont. pg. 2*

**INSIDE THIS ISSUE** A House That's Not A Home, **pg. 1** . . . Not Exactly Things of Beauty!, **pg. 3** . . . Prevent Fires-Remove Your Brush, **pg. 3** . . . The "Cat of One Color", **pg. 4** . . . What Should You Do If You Encounter a Mountain Lion?, **pg. 5** . . . Summer Reading: Book Review, **pg. 6** . . . Memo From the Fire Dept., **pg. 6** . . . BCA 2004 Membership Application, **pg. 7** . . . BCA 2004 "Trees of Support" Donor Roster, **pg. 8** . . . What Would You Do in the Event of a Big Fire? An Earthquake? A Terrorist Attack?, **pg. 9** . . . Sixty Pots: Lower Benedict Gets a "Make Over", **pg. 9** . . . "The Road Less Travelled": Upper Benedict Canyon Improvement, **pg. 10** . . . The Benedict Canyon Storm Drain Channel, **pg. 11** . . . President's Letter, **pg. 12** . . . Fire Station 71, **pg. 13** . . . Canyon Committee for Eradication of Gas Blowers, **pg. 14** . . . A Life In the Canyon, **pg. 16** . . . Do You Live in Your Own House?, **pg. 16** . . . "Historic Benedict", **pg. 16** . . . A Lifetime of Service, **pg. 17** . . . A Humorous Perspective on Canyon Real Estate, **pg. 18** . . . Mail Theft Prevention Tips, **pg. 19**

*A House That's Not a Home  
Cont. from page 1*

building loan for \$30,000 was attained the following year, and an additional \$7000 was raised in just two months for furnishings.

The bones of three indigenous Indians were found during the excavation for the new clubhouse. Just 50 years earlier, their tribe continually attacked Maria Rita Valdez and her children on their rancho. When Maria Rita asked for assistance



from the City of Los Angeles, a small army was sent to her rescue. It was reported that during the battle, three Indians were killed before the rest retreated. A bronze plaque embedded in a large rock, commemorating the battle, stands on the corner today.

Nine years after the club's inception, a new chapter in its history began, with the completion of the clubhouse in October of 1925. By 1926, the population of Beverly Hills had grown to 12,000. Club programs were chosen to please a multitude of tastes, and activities were established to answer the challenge of advancement in all lines of culture, including a Needlework Guild. A Drama Section, first

organized in 1922, was devoted to the reading, studying and producing of plays. In 1925, member Maureen Gee wrote "The Delicate Child," the winning play in the General Federation Playwriting Contest. It was produced for the National Convention at Atlantic City and later for the Los Angeles District Convention in Long Beach. The Current Events Section, also originated in 1922, distinguished itself throughout the years with its inimitable series, "Resumé of Current Events," presented by Aline Barrett Greenwood.

A section on Child Welfare was organized in 1926, but was short-lived due to its duplication in part by the Parent-Teacher's Association. Also that year, a collaboration with the Motion Picture Department of the Los Angeles District Federation instituted Junior Matinees in Beverly Hills, which provided chaperones to assure mothers and their children that a picture would be both suitable and entertaining. This pre-viewing of films was appreciated in a time that had yet to institute a system of standard values within the entertainment industry. In 1927, the Art Committee was created, as was the Scholarship Loan Fund, providing one or more girls with a college education.

In 1929, as society felt the malaise of the depression, the Applied Psychology Sections were organized for the "thoughtful encouragement of psychological reasoning." Initiated in 1931, the Annual Rummage Sale served a two fold purpose: clothing, books, and all manner of things were purchased by those who could not afford to buy new, and proceeds from the sale were turned into philanthropic channels. A Bible Section

was formed in 1939.

What many of us who grew up in Beverly Hills remember most vividly was the Club's hosting of Elisa Ryan's social dancing classes during the '40s and '50s. Boys and girls would line up on either side of the Club's Grand Hall awaiting the playing of "The Teddy Bear's Picnic" on the phonograph. That was a signal to the 11-and 12-year old boys to cross the hall and select a dancing partner from among the girls lined up on the opposite side. It was a moment of sheer terror for the boys: not only were the girls inevitably more mature and sophisticated at that age, but there was also the chance, however remote, that a girl would reject the invitation. Of course, the august, high-ceilinged dignity of the Club's interior made the occasion that much more formidable.

All in all, it is in this venerable setting for community social life, that the women of Beverly Hills can form their friendships based on common interests and understanding. With the passing of an era, the "opportunity for social service" has expanded. Yet, it has been met proportionately, generously and with sincere effort on the part of the Beverly Hills Women's Club. In 1992, the Women's Club celebrated its 75th anniversary. Its motto, inscribed over the Club's fireplace: One Feast, One House, One Mutual Happiness.

If you would like to experience the Beverly Hills Women's Club firsthand, you are welcome to attend the Benedict Canyon Association monthly meetings. We meet on the second Monday of each month at 7 PM at the clubhouse. Free parking, coffee, refreshments and all the local history you can absorb in one evening. ■

# NOT EXACTLY THINGS OF BEAUTY!

By Sandra Margolis



**W**e who are longtime residents of the Canyon remember when our streets were free of litter, when construction was rarely seen or heard, when “moveable feast vehicles” were seldom seen and when traffic flowed at a leisurely pace.

Those days are but a memory. Now our canyon is suffering from another creeping blight: blue, black and green trash bins that sit in the streets up to 7 days a week! Not only are the bins unsightly, they also create a dangerous nuisance.

Los Angeles City Ordinances state that containers may not be put out before 6:00 PM on the night

before pick-up and must be removed by 6:00 PM on collection day. In addition to this schedule, each household has one Bulky Item Pick-up per year. Please call: (310) 575-8392 or (213) 485-4906.

Please instruct your gardeners who work at your home on Monday, Tuesday or Wednesday that IT IS NOT OK to put containers out earlier than Wednesday evening.

If you need more information, please call (800) 773-CITY and the Bureau of Sanitation will answer your questions.

Thanks for doing your part in helping to keep Benedict Canyon beautiful. ■

# PREVENT FIRES—REMOVE YOUR BRUSH

By Sandra Margolis

**B**enedict Canyon residents are fortunate to live in and enjoy our rustic and beautiful canyon. With traffic and the hustle and bustle of the city only minutes away, at home in our Canyon we can hear the rustling of tree leaves, birds singing and coyotes crying—a most unusual blend of urban and country living that we must protect.

Drought conditions in the past several years, coupled with the over abundance of dry brush in the Canyon, pose a constant and devastating threat of a major fire which could—in a flash—destroy hundreds of our homes.

Our Fire Department inspects the homes in the canyon, routinely issuing notices to homeowners reminding us of the requirement to clear brush surrounding our homes by May of each year. If the notice is not complied with, a Notice of Non-Compliance is issued. The Fire Department will then eventually clear the brush and send the owner a hefty bill for the services.

Many homeowners remove brush around their homes on a year-round basis, realizing maintenance is easier, cheaper and safer.

**Please cooperate—Clear your brush. The home you save may be your own! ■**

# THE “CAT OF ONE COLOR”

*By Susan Moses and Kathryn Scott*

For the past year, two radio-collared mountain lions, a 140-pound male and an 80-pound female, have been tracked south of the 101 Freeway between Malibu and the Santa Monica Mountains. A third has been traveling “between Point Magu in the west to Topanga Canyon, but hasn’t crossed the 405 yet,” according to scientist Ray Sauvajot, a wildlife ecologist working for the National Park Service. “We estimate there are between four to ten mountain lions in the Santa Monica mountain area, but that doesn’t mean there aren’t more.”

Mountain lions-also known as cougar, puma, catamount, and even panther-are tawny in color, with a white belly and black-tipped ears and tail, and are solitary by nature. “So far the mountain lions are behaving the way they should, consuming one deer a week and staying out of sight,” Sauvajot says. “Wearing the GPS collars, we can track them through radio telemetry and tell where they’ve been. We know, for example, that the male and female have probably crossed paths. They are definitely aware of each other, and there’s always the chance we’ll some day see signs the female is settling in to produce cubs.”

Although females can have litters of up to four kittens, generally two survive the first year, with only one joining the adult breeding population at two years of age. The sexes look alike, though males are 30 to 40 percent larger, measuring six to eight feet from nose to tail tip, compared with five to seven feet for females. A typical adult male weighs 110 to 180 pounds, with a rare heavyweight topping 200 pounds, while the female weighs in at 80 to 130 pounds. Born weighing less than a pound, with blackish-brown spots and dark rings around their tails, kittens stay with their mothers for about 18 months. The cubs begin nursing minutes after birth, and within three weeks weigh more than two

pounds. After they are weaned at two to three months, the young start to lose their spots and they accompany their mother to kills. At 17 months, their baby blue eyes turn to golden brown.

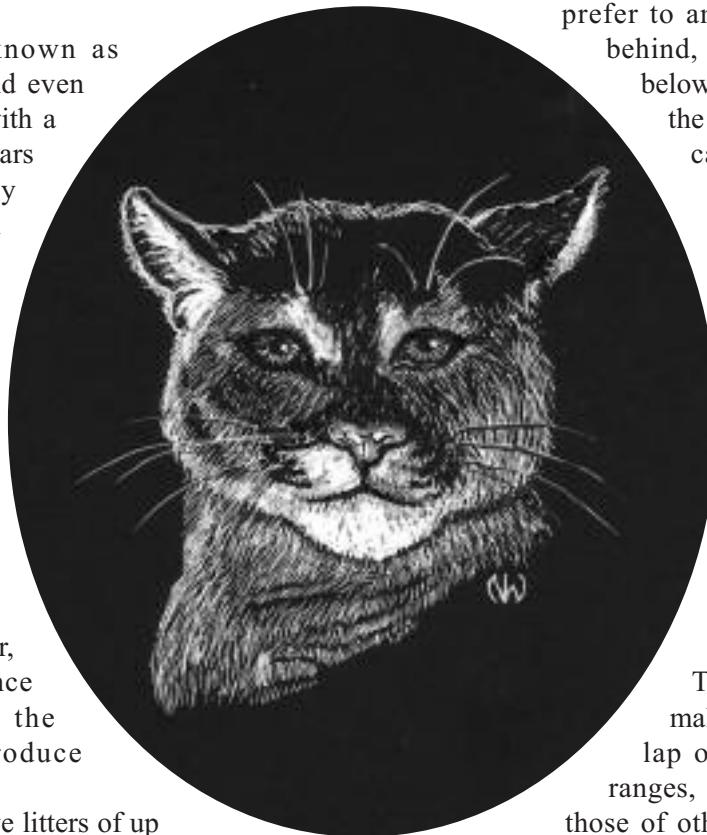
There are anywhere from 4,000 to 6,000 mountain lions in California, but it’s highly unlikely you’ll ever catch sight of one of these elusive animals, the largest pure carnivore in the state. There is a chance, though, that one has seen you and avoided confrontation.

Mountain lions usually hunt alone, at night. They prefer to ambush their prey, often from behind, and kill with a powerful bite below the base of the skull, breaking the neck. They often cover the carcass with dirt, leaves or snow and may come back to feed on it over the course of a few days.

Both sexes tend to space themselves out and confine their movements to individual home ranges, which vary in size from 25 to 300 square miles. An adult male’s home range typically spans over 100 square miles, while females generally use smaller areas of about 20 to 60 square miles. The larger home ranges of the male mountain lion typically overlap or encompass several female ranges, but only occasionally overlap those of other resident males. However,

female home ranges commonly overlap those of each other. Possession of a home range increases a resident’s likelihood for survival by guaranteeing an established hunting ground. Resident adult males use scrapes, collected piles of pine needles, leaves, or dirt that they mark with urine or scat, to designate their home range.

In a healthy ecosystem, mountain lions help to balance wildlife populations. They generally feed on deer, but can survive on a variety of prey including rodents, birds, porcupines, fish and raccoons, as well as livestock



*Cont. pg. 5*

THE “CAT OF ONE COLOR”

Cont. from Pg. 4

and domestic animals. Their natural life span is about 12 years in the wild and up to 25 years in captivity. Natural enemies include other lions, disease, motor vehicles and people. The population, once threatened by bounty hunters who purportedly killed over 12,500 lions between the turn of the century and the early 70’s, is protected on the West Coast by state laws that ban sport hunters.

Over the past decade, and fueled by media reports of rising rates of human-cougar interaction, debates over the control vs. protection and habitat conservation have resurfaced between the environmentalists and the hunting lobby. However, the threat to human safety is low. In fact, in the United States more people die each year from bees, dogs, rattle snakes and black widow spiders.

Early Spanish explorers once called the creature *amigo del cristiano*, friend of the Christian—a curious name for a lion. Native Americans perceived the majestic beast as a spiritual power, threat and friend, and believed it had a role in maintaining harmony between heaven and humankind. The lion was the animal chief to the Miwok Indians and the Chickasaw called this shy and elusive feline “the cat of God.” Fierce, beautiful, and clearly an icon of wildlife, the mountain lion inspires awe, respect, and passion, and remains a living link to our proud, and rugged, yet dwindling outdoor heritage. One thing is for sure, mountain lions will never come into our home, join us at our table and negotiate the conditions of our coexistence. It is we who must adapt to the mountain lion way of life if they are to survive in the world we are shaping. ■

WHAT SHOULD YOU DO IF YOU ENCOUNTER A MOUNTAIN LION?



**DO NOT HIKE ALONE:** Mountain lions prefer single prey.



**KEEP CHILDREN CLOSE TO YOU:** If you have small children with you, pick them up if possible so they don’t panic and run. Although it may be awkward, pick them up without bending over or turning away from the mountain lion.



**DO NOT APPROACH A LION:** Most mountain lions will try to avoid a confrontation. Give them a way to escape.



**DO NOT RUN FROM A LION:** Running may stimulate a mountain lion’s instinct to chase. Instead, stand and face the animal. Make eye contact.



**DO NOT CROUCH DOWN OR BEND OVER:** A person squatting or bending over looks a lot like a four-legged prey animal.



**DO ALL YOU CAN TO APPEAR LARGER:** Raise your arms. Open your jacket. Again, pick up small children without crouching or bending over. Throw stones, branches, or whatever you can reach without crouching or turning your back. Wave your arms slowly and speak firmly in a loud voice.

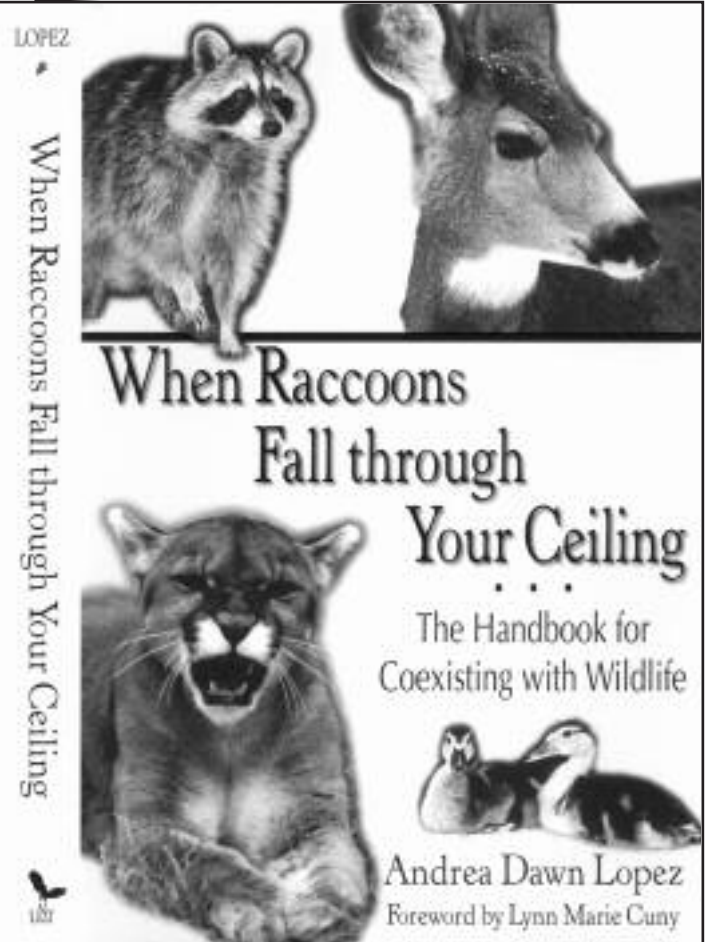


**FIGHT BACK IF ATTACKED:** Fight back as if your life depends on it. It does.

## Summer Reading: Book Review

By Kathryn Scott

*When Raccoons Fall Through Your Ceiling: The Handbook for Coexisting with Wildlife*, by Andrea Dawn Lopez (U. of Texas Press, 2002) is a charming and highly informative book about how to live with the critters in your own backyard. From bobcat and deer to birds and snakes, author Andrea Dawn Lopez, a former manager at Wildlife Rescue and Rehabilitation, Inc. in San Antonio, Texas, tackles a wide variety of situations that can occur when human and non-human worlds clash. This is a practical handbook, anecdotal and amusing, that presents sensible advice on how to safely deal with, and enjoy, wildlife here in our canyons.



### MEMO FROM THE FIRE DEPARTMENT

TO: Homeowners in Mulholland, Beverly Glen and Benedict Canyon Areas  
 FROM: Craig E. Evans, Captain, Fire Station 99 (Mulholland & Beverly Glen)  
 SUBJECT: No Parking Enforcement in the Hillside



Hello Neighbors:

As the devastating fires of the last season have shown, Southern California, including our own neighborhood, is ripe for disaster. One of the difficult issues we face are the narrow streets and limited access for emergency vehicles and evacuation of the residents. The Los Angeles Fire Dept., the Los Angeles Police Dept., and the Dept. of Transportation (Parking Enforcement) have joined forces to better manage the problem of illegally parked cars. The enforcement period is historically, the greatest fire danger period. Please add this material to your newsletters or other communication resources. This same attached flyer can be obtained at [www.lafd.org](http://www.lafd.org), click on "No Parking Priority Enforcement Program" selection. Thank you for your cooperation and assistance with this important issue.

Craig E. Evans, Captain  
 Fire Station 99  
 14145 Mulholland Dr., Beverly Hills, CA 90210  
 Phone (818) 756-8699

# Benedict Canyon

## BENEDICT CANYON ASSOCIATION 2004 MEMBERSHIP APPLICATION

*I want to help protect and preserve our canyon and the environment in which we live and express my support by joining the Benedict Canyon Association at the following membership level:*

_____	\$1000+	Oak Tree
_____	\$500	Sycamore Tree
_____	\$250	Eucalyptus Tree
_____	\$100	Pine Tree
_____	\$75	Basic Membership

Name \_\_\_\_\_

Address \_\_\_\_\_

City, State, Zip \_\_\_\_\_

Daytime Phone \_\_\_\_\_ Evening Phone \_\_\_\_\_

E-Mail Address \_\_\_\_\_

Benedict Canyon Association mailing lists are strictly confidential and are never sold or shared.

\_\_\_\_\_ I do not wish my name to appear in the BCA Newsletter, but please accept my enclosed contribution.

You can become a member of BCA through Basic Membership or as part of our "Trees of Support" Donor Program. Many members are choosing to designate their membership "In Honor of..." or "Memory of..." for someone who used to live in Benedict Canyon, a beloved family pet or anyone whom you would like to honor in this special way. Basic Membership names will not be published. Also, you may contribute at the donor level and elect not to have your name published. Benedict Canyon is protected only through your individual contributions. Thank you for supporting your community.

**For membership information, please call our Hotline - (310) 553-4222(BCA)**

Benedict Canyon Association is a non-profit organization.

My payment of \$ \_\_\_\_\_ is made by:

\_\_\_\_\_ Check payable to Benedict Canyon Association

\_\_\_\_\_ Please charge my \_\_\_\_\_ VISA \_\_\_\_\_ MasterCard \_\_\_\_\_ AMEX

Card# \_\_\_\_\_ Exp. date \_\_\_\_\_

Name as it appears on card \_\_\_\_\_

Signature \_\_\_\_\_

Please return this application along with your payment to:  
**Benedict Canyon Association, P.O. Box 1265, Beverly Hills, CA 90213**

Cut On Dotted Line



# Benedict Canyon

## 2004 BCA "Trees of Support" Donor Program Roster

### OAK TREE

Diane Driscoll  
Richard Naegele

### SYCAMORE TREE

Barbara Jaynes  
Martin Krell  
Mark & Christina Siegel  
(1) Anonymous

### EUCALYPTUS TREE

Joshua & Jennifer Berman  
Joni & Jody Berry  
Jacqueline Bisset  
Laifun Chung & Ted Kotcheff  
Rafe Cohen  
Randee & Kenneth Devlin  
Evelyn Dorfman  
Vera Dunn  
David & Barbara Elson  
Susan & Peter Feibleman  
Evans Frankenheimer  
Lori & Simon Furie  
In Memory of Gloria Kahn  
David & Terry Kramer  
The George R. Kress House  
Ian & Doris La Frenais  
Lawrence & Arleen Ruby Leviton  
Rip Mason  
Margaret Maw  
In Memory of Marion H. Montgomery  
Rick Nicita & Paula Wagner  
J.A. Patterson  
Mary & Norman Pattiz  
Phil Proctor & Melinda Peterson  
Brett Ratner  
Melissa Rosenberg & Lev L. Spiro  
Albert & Wanda Ruddy  
Myrna Schwam  
Art & Marilyn Spence  
Marilyn & Joseph Stefano  
David Styne  
Linda Shokrian  
Michele & Michael Vignieri  
(1) Anonymous

### PINE TREE

Dennis Abramson  
Linda & Shan Afcharieh  
Elaine & Michael Agran  
James Anderson & Lynn Fireside  
Bijan & Sima Ansari  
Carolyn & George Bender  
Gary & Valerie Bird  
Bloomgarden/Phillips  
Ronald Boldt & Judith Shelton  
Alex Bouzari  
Ellen Brown & Ted Steinberg  
Robert & Jane Bretter  
Ron & Jan Cannan  
Bertha & Bob Carp & Heinie  
Colleen & Phil Carson  
Betty Chaplin  
Michael Chasteen  
Larry Chrysler  
Jeffrey Cohen  
Marta & Hal Cooper  
Mr. & Mrs. Alessio Coppola  
Mark Damon  
Marlene & Morris Dennis  
Sheila Dick  
John & Julie Eidsvoog  
Joseph & Marilyn Eisenberg  
Viktorija & Don Empakeris  
Lisa Engel & Brent Smith  
Ferdinand & Lennie Fam  
Ruth K. Felmus  
Alan Fine  
Margaret Fisher  
Burton Forester  
Catherine Shirriff Forstmann  
Rosemary Forsyth & Robert Yuro  
Philip Forte  
In Memory of Jock Gaynor  
Tony & Linda Gerber  
Natalie & Alex Gershman  
Allan & Cara Glazer  
Barry Goldberg  
Gary & Ann Goodgame  
Mr. & Mrs. Sam Gordon  
Marvin & Inger Gross  
Roger Halfhide & Patricia McVerry  
Stan & Mimi Handman  
Chris & Bill Harper

James & Jean Harris  
Bob & Mary Ridings Herman  
Gwen & Arthur Hiller  
Urban S. Hirsch III  
Richard & Dea Holesapple  
Susan & David Horn  
Vicki & Preston Johnson  
Robert & Sylvia Jones  
Pete Kameron  
Susan & Greg Kay  
John & Melissa Kelly  
Bernard Kester  
Deborah A. Klar  
Gertrude Kline  
Rosa Koppens  
Hope & Don Kurz  
Morrie & Pattie Lachman  
Daniel & June Lang  
Lee Lasker  
Elizabeth Latshaw  
Felicia Farr Lemmon  
Richard Leveckis  
Marvin & Helen Levin  
Howard & Carol Levy  
Ron Levy  
Fran & Steve Littlefield  
Elaine A. Lotwin  
Afsaneh Malackel & Brian LeSage  
Anthony Mandekic  
Connie & Ron Mandell  
Barbara Marcus  
Jerry & Sandy Margolis  
Linda & Thomas Markovitz  
Sally Mason  
Lowell & Wende Mate  
Jennifer Mayo & Flinn Flexer  
Julie McDonald  
Geoff and Kathryn Miller  
Nickie & Larry Miner  
Candy Mintz & Dave Caplan  
Claudia Mirkin  
Eustace Moore  
Sheila & Jeff Morris  
Dagmar & Alex Moscovicz  
Richard & Sandra Mosk  
Mary Ann & John Musico  
Anne & Jimmy Murphy  
Melville & Alice Nahin

Abram Nalibotsky  
C.R. Nev & V.L. Ambrosini  
Barbara Nichols  
Claudette O'Brian  
William L. O'Toole  
Gary & Nita Polinsky  
Max Ramberg  
Stephen & Carol Randall  
Rachelle & Jim Rosten  
Norman & Mary Lou Rotenberg  
Jolyn Rudelson  
Ida & Roman Russ  
Mr. & Mrs. Larry Russ  
Joanne Sackheim  
Naty & Debbie Saidoff  
Jeffrey & Mindy Salberg  
Samuel Schwartz  
Arthur & Arlene Schwimmer  
Robert & Margaret Sanford  
Martin Seaton  
Martin & Marilyn Salvin  
Libby & Norm Shapiro  
Sheldon & Andrea Shapiro  
Barbara Shuler  
Linda & Perry Silver  
Cortez Smith  
Gordon & Diane Sherman Smith  
Stanley W. Sokoloff  
Judith & David Sollott  
Andrew Solt & Claudia Falkenburg  
Behzad & Betza Sooffer  
Shirley Stamen & Stuart Jaffe  
Jean Stone  
Jim & Randi Swindel  
Gordon & Phoebe Trachtenberg  
Jamie & Patrick Tierney  
Ann Turkel  
Scott Vaughan  
Chrisann Verges & Ricky Jay  
Robert J. Wagner  
Janet Wood & Jay Silverman  
Tobi and Brandt Wax  
Ellie & Barry V. Weinstock  
Lynne & Jacques Wertheimer  
Marcia Williams & Gene Lucero  
Lawrence & Nancy Wolf  
Virginia & Gregory Young  
(12) Anonymous

*\*Donations received after May 15, 2004 will appear in the next newsletter.*

# WHAT WOULD YOU DO IN THE EVENT OF A BIG FIRE? AN EARTHQUAKE? A TERRORIST ATTACK?

*By Marilyn Stefano*

**L**ike buying a burial site and arranging for our own funeral. “It’s inevitable, but who wants to think about that today? Maybe tomorrow, or next week.” Isn’t that the commentary running through our heads?

How much more comfortable we’ll be when we’ve done something - bought that earthquake pack for home and car. Do we know how to use the fire extinguisher that we bought a few years ago? Come to think of it, does it still work? Do we know any first aid? Do we have the crow-bar or heavy-duty gloves or shovel to dig someone out of the debris? Do we have a whistle to call for help?

Or do we know how we’ll communicate with our family members should there be a disaster? Do we pick up the phone to reach someone at home? Call a neighbor? Use our cell phone? **NOT IN THE EVENT OF A DISASTER!!!** Phones won’t be working-so many people will be using them that the system will be

busy-or even down.

Don’t assume that the Fire Department or Police will be out looking for us right away. They’ll be too busy surveying the scope of the disaster or putting out the big fires that might consume the whole city.

We who enjoy our isolated lives in our beautiful canyon will have to depend on each other, and we’d better know what to do for at least 3-4 days till some help might find us. If you think your neighbor will help, he’s probably thinking you will help him and he’ll be taking care of his family first.

### **What do we need to do?**

First, stockpile food, water, sleeping gear and sanitary equipment, plus whatever medication is needed. Keep cash on hand.

Second, identify people in the canyon with ham radios, so they can radio out of the canyon to their network of ham operators outside the disaster area.

Third, identify doctors and nurses in the canyon who will help us while we’re on our own.

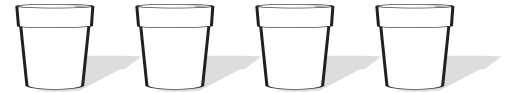
Fourth, know how to rescue people, perform first aid, and calm frightened children, seniors, animals, and ourselves too.

Your Benedict Canyon Association Board has been gathering information about this for some time now, but obviously we can’t do it alone. We need help from everyone in the canyon. Enclosed is a form to be filled out by every one of us, so we know who will need special help, and who might provide that help. With the heightened level of potential terrorist activity and the ever-present fire and earthquake danger, there is no time to waste. We must know how to survive on our own.

Please fill out the form, and mail it to the address on the reverse side. Let’s go to bed at night knowing that we’re prepared for anything that might be thrown at us, and that **WE WILL SURVIVE!** ■



## SIXTY POTS



### Lower Benedict Gets a “Make Over”

**A** recently completed project was the restoration and replanting of the 60 planted pots on Lower Benedict Canyon Drive. These plantings were initially installed to conceal the water drain upon completion of the water drain in 1967.

BCA received a \$10,000 matching grant from the City of Los Angeles Board of Public Works. This project, at the entrance to our canyon, is part of our on-going beautification project.

Upkeep is made possible through your yearly contributions to our Donor Fund. Thank you Benedict Canyon residents. ■

*Babette Bloomgarden, Chairperson BCA Beautification Project*



# “THE ROAD LESS TRAVELLED”

## Upper Benedict Canyon Improvement

By Don Loze

October 30, 2003 the Groundbreaking Ceremony for the one of the City’s largest reconstruction projects was held atop Benedict Canyon on Mulholland Drive. It culminated years of effort by Canyon residents, City and County staffs, Councilman Jack Weiss, Supervisor Zev Yaroslavsky and Public Works Commissioner Ellen Stein.

On December 2, Benedict Canyon between Mulholland Drive to Hutton Drive was closed to through traffic for the construction and installation of the storm drain.

### THE PROJECT:

This major project reconstructs 9600 feet of roadway from Hutton Drive to Mulholland.

Construction of a low-flow storm drain system, 4300 feet long north of Hutton Drive will prevent future roadway deterioration.

Daily run off and perennial hillside flows, together with increased levels of traffic have resulted in significant roadway deterioration. The storm drain will collect water from perennial hillside flows and the daily water run-off that eroded Benedict Canyon Drive in the project area. New catch basins will be installed to provide more permanent containment of surface water flow. Concrete curb and gutter will be installed all along Benedict Canyon between Mulholland and Hutton Drive.

After installation of the storm drain and catch basins, the Department of Water and Power

then will replace the aged and leaking water main lines that have been a serious source of water flow eroding the roadway surface over the years. DWP will begin their work, which will take approximately three months to complete, immediately following completion of the storm drain.

Additionally, we will see the replacement of a deteriorated down slope bulkhead that supports the road, along with long needed replacement of guard rails guiding traffic flow away from the road’s edge.

North of Wallingford a 2000-foot portion of the roadbed is being rebuilt with reinforced concrete to reestablish the foundation discovered weakened after the Northridge Earthquake. The road will then be resurfaced from Mulholland to Hutton.

After all the work is completed, the Department of Traffic will install traffic-calming striping, repaint the dividing line and insert the reflective Botts dots already installed south of Hutton.

In order not to encourage increased traffic volume and to discourage speeding, roadway reconstruction will be confined within the

existing roadway width and hold the existing alignment. The completed project should result in a safer canyon for everyone.

### CONSTRUCTION OPERATION AND TRAFFIC CONTROL

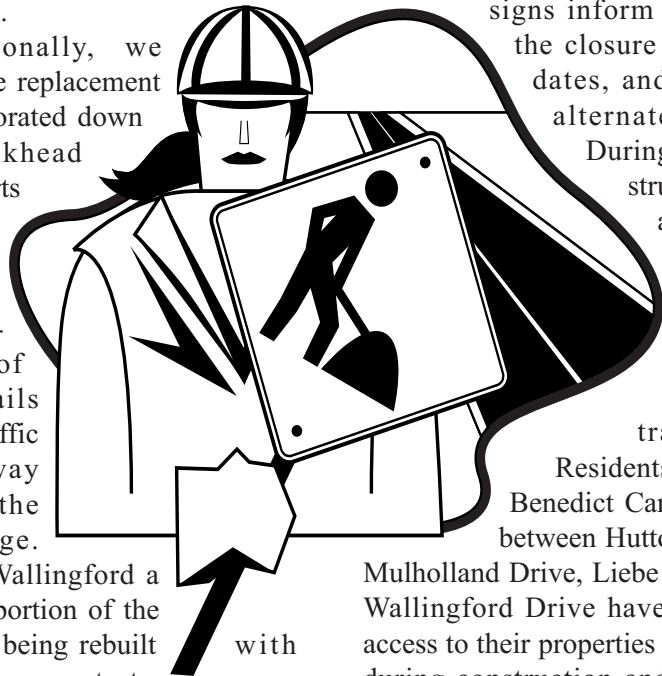
Benedict Canyon Drive between Hutton Drive to Mulholland is closed to through traffic Monday through Friday from 7:00 A.M. to 5:00 P.M. during construction through November 2005. There is no construction activity on weekends and holidays. Traffic signs inform drivers of the closure times and dates, and suggests alternate routes.

During non-construction days and times, Benedict Canyon is open to through traffic.

Residents living on Benedict Canyon Drive between Hutton Drive to

Mulholland Drive, Liebe Drive, and Wallingford Drive have vehicular access to their properties at all times during construction and non-construction hours. Residents were given vehicle placards allowing them access at various checkpoints. Access to emergency services such as, fire, police and routine services such as trash collection and others will be provided at all times during construction and non-construction hours. The utility services will be maintained uninterrupted. Upon completion of the Benedict Canyon Drive Improvement Project, full access to Benedict Canyon Drive will be restored.

*Cont. pg. 11*



“THE ROAD LESS TRAVELLED”

*Cont. from Pg. 10*

SPECIAL  
CONSIDERATIONS/SAFETY:

Due to the size and complexity of this project, pedestrian and vehicular traffic will be adversely affected during construction. During construction, we need to cooperate by not parking our vehicle (s) at or near the work area, such as the street or the roadway shoulders. Anyone not directly involved with the project should remain at a safe distance from the construction area and equipment at all times. Parents and guardians should keep children at a safe distance from all construction areas and assure adequate supervision.

FINANCING:

Financing is a cooperative City and County effort. The contract for the storm drain was let at \$1.2 million and the project through completion will exceed \$6 million.

The storm drain work is funded by the Los Angeles County Department of Public Works. The City of Los Angeles is funding street reconstruction, bulkhead work and waterline replacement. Coordinated by the City’s Department of Public Works, the project integrates the services and funding of the City and County through Flood Control District, Bureau of Engineering, Department of Street Services, Department of Transportation and Department of Water and Power.

We give special thanks to the following for their contributions in getting the project started and who will bear the responsibility for its completion.

*Cont. pg. 19*

# THE BENEDICT CANYON STORM DRAIN CHANNEL

*By Jolyn Rudelson  
Former President BCA 1968*

In 1962 there were no parades, no marching bands and no flags to greet the news that the Army Corp of Engineers was about to invade Benedict Canyon. Instead shouts of “not in our canyon” greeted the news that a multi-million dollar ditch was going to be dug at the corner of Hillgrove Drive on the North end, south along Benedict Canyon on the east side of the old Beverly Hills School property, otherwise known as Maybrook. ‘Lucky Benedict’ had been selected as the site of the headwaters of the storm drain channel that was going to be dug thru Beverly Hills westward to the sea.

The Benedict Canyon Association soon discovered that even if they could sometimes fight City Hall successfully, the battle was already lost when it was waged against the United States Army. Hostilities raged when the Association discovered the owners of the Harold Lloyd Estate had negotiated to pay \$50,000 to get their portion of the channel put

underground, while the Benedict Canyon residents were told their portion had to remain open.

In January 1963, Jerrold Rudelson took over the presidency of the Benedict Canyon Association, and with it the headache of the ditch. He immediately gathered his forces from the Association Board and marched down to confront the enemy. What they saw was daunting. The Army Corp of Engineers showed them a model demonstrating what could happen when the 50 year predicted flood hit the canyon and reached the headwaters of the channel. In what appeared to be a little boy’s dream toy, gallons of rushing water poured over models of cars, trucks, trees and houses. To the members of the board who witnessed this presentation, the display was nothing short of a nightmare. No longer was unsightliness the problem, but the safety of the children in the canyon who would find a ditch that large, attracting bikes, roller skates and skate boards, too tempting to

*Cont. pg. 12*



**STORM DRAIN**  
*Cont. from Pg. 11*

resist. When a protective wall was suggested, the board members were told that a wall was only possible on the residential side. On the street side only a breakaway fence that would not obstruct the flow of cars, houses and trees was suitable.

Immediately after the viewing, the association started to make plans to deal with the problems the ditch would create. By the end of June, a design had been completed which called for large pots with trees to be planted along the storm drain channel. The cost of the pots and trees would run \$10,000, and remuneration would be sought from the City of Los Angeles. A problem arose: The councilman who had promised the Canyon the money was no longer in office.

On July 1, 1963, Rudelson, file in hand, went down to City Hall to confront the new councilman, J.B. Potter, who had taken office that very day. He arrived to find the councilman in a slightly shell shocked condition. "My predecessor left all his desk and file drawers empty, I am sorry to say. There is not even one scrap of paper to tell me what the history is of any of the ongoing projects in my district," the councilman said. After Rudelson handed over a complete file to the grateful councilman, the money for the beautification was accomplished.

Once the storm drain channel was completed, the unanswered question still remained: Would the channel really do the job the model of the project had predicted? Sadly the answer was no. On the evening of January 24, 1969, fatefully after the annual Benedict Canyon

*Cont. pg. 17*

**BCA PRESIDENT'S LETTER**



*"Never doubt that a small group of thoughtful, committed citizens can change the world. Indeed, it is the only thing that ever has."  
 Margaret Mead*

Our expected start date for the reconstruction of the Benedict Canyon roadway from Hutton to Mulholland, was moved from July to November 2003, and is now underway. On October 30, city officials joined Benedict Canyon residents in a ceremony at Benedict and Mulholland commemorating the start of the project.

We are continuing to work on the passage of a retaining wall ordinance, to be part of the Los Angeles Building code. This new ordinance, will for the first time, place a limit on the height of retaining walls in new residential construction, and will require appropriate landscaping to cover the walls allowed.

Many residents have called the BCA to praise the new white lines marking the side of the traffic roadway up the canyon. The lines tend to keep traffic within the roadway and slow speeders. They also allow residents and service personnel along the canyon to clearly see when their parked vehicles are extending into the roadway.

The 60 large floral pots along the drainage channel have undergone a long needed rehab. The project will be completed by the time this newsletter is published.

The recent fires in Southern California have given yet another reason to move forward with an emergency preparedness plan for Benedict Canyon, working with our Neighborhood Council and Fire Departments. Please fill out the enclosed mailer and return to BCA.

We are all volunteers, working to improve our canyon's safety and beauty, for all its residents. Please join BCA and volunteer your time on a favorite project, or ongoing committee.

Barbara Nichols  
 President BCA

# FIRE STATION 71

*By Marilyn Stefano*

Several months ago, around 9:30pm, my husband Joseph told me that he was having trouble breathing. I called 911 and was told that help was on its way. I gave my husband an aspirin, turned the exterior lights on, unlocked the back door, opened the gate and waited - a much shorter time than I expected.

When the paramedics arrived, the first face I saw was that of Capt. Jeff Mills, of Fire Station 71, at the corner of Beverly Glen & Sunset. He's the captain I've known the longest, and it was like greeting a long-lost relative. With him were at least 6-8 big strong men in fire-fighting uniforms, who quietly went to work treating my husband. They asked him questions, hooked him up to an EKG machine, gave him an IV and checked on his regular medications. Throughout this process, they communicated with hospital staff, sending information about his vital signs and receiving instruction on how to proceed. It was the most reassuring feeling to have all those people there saving my husband's life.

I couldn't help but feel very good, and proud, that I had played a part in raising \$250,000 from the

communities of Bel Air, Holmby Hills, Westwood, Beverly Glen, and Benedict Canyon to benefit our fire-fighters and paramedics. Everyone who responded with donations to fund improvements in the station should feel very proud.

When the Committee to Adopt Fire Station 71 first toured the station in May 1999 and saw the living conditions, we were appalled. Our fire fighters and paramedics were living in a 57-year-old structure without heat or air-conditioning. Most alarming, the building

---

*"I couldn't help but feel very good, and proud, that I had played a part in raising \$250,000 from the communities. . ."*

---



*Marilyn Stefano, Boardmember BCA and Richard Anderson, resident*

had a diesel fume exhaust system spewing noxious fumes into their living areas-the kitchen, sleeping-quarters, exercise room-causing them headaches and respiratory illnesses. The antiquated electrical system also needed complete renovation. The dim lighting was barely sufficient to read a map, and using everyday appliances often blew fuses. On one occasion, Christmas tree lights

caused a power outage! In addition to addressing health, safety and comfort issues, we realized the entire station required painting and redecoration. We vowed to take as good care of our fire fighters as they do of us.

The community responded with auction items and services for our

fund-raiser in December, 1999. Janet Leigh, Casey Kasem, Richard Anderson and officials from the Mayor's office and Fire Department were on hand for the event, which included a demonstration of the Jaws-of-Life, a display of antique fire-trucks and games for the kids. The Fire Department officials were so impressed with the response that they decided to do some upgrades on their own. Brian Studwell of Bel Air oversaw the project, convincing an architect and an engineer to donate their services.

Four years later, on May 18, 2003, we held the formal Open House Dedication, attended by many city officials, including Fire Chief William Bamattre. In addition to the complete renovation, the station also acquired an ambulance and a staff of paramedics. This new service was vitally needed because most of the calls received are for emergency medical assistance, rather than fire.

When you are in the neighborhood, please stop in and say hello to those great guys, and also look around to see what your support has achieved. ■

# Canyon Committee for Eradication of Gas Blowers

*By Lamar Card*

**If you are fed up with the leaf blowers' insult to our canyon quality of life, join the Committee's efforts: contact 310.927.4057**

**FICTION: Gas leaf blowers are not illegal in L.A.**

**FACT: The L.A. law is clear: No gas leaf blowers!** LAMC Ord. No. 171,890: no gas-powered blower shall be used within 500 feet of a residence at any time. Both the user of such a blower as well as the individual who contracted for the services of the user, if any, shall be subject to the requirements of and penalty provisions for this ordinance. The fine for violation is \$270 for gardener and \$270 for homeowner. It is also illegal in Beverly Hills.

**FICTION: The noise from leaf blowers is not bad.**

**FACT:** Leaf blowers are routinely used less than 50 feet from non-consenting pedestrians and neighboring homes that may be occupied by home workers, retirees, day sleepers, children, the ill or disabled, and pets. World Health Organization specifies outdoor noise levels should be 55dba or less. The decibel scale escalates exponentially – a 10 pt. increase represents a 100% louder disturbance. A 65-

decibel leaf blower is 100 times too loud to allow healthful sleep (which often takes place during day-time hours for night workers, children and others). It is amplified far beyond this in the canyons and is a noise that can impair work concentration or sleep even when the sleeper is not awakened.

**FICTION: We hardly ever hear leaf blowers. They can't be too prevalent.**

**FACT:** Research has shown this opinion is frequently from residents who spend the day in the office during the hours when the gardeners are working. They sometimes never hear them. Those who work at home are reporting constant and increasing disturbance. Acoustics experts say blower noise is especially irritating because of its particular pitch, the changing staccato amplitude, and the vulnerability inside homes of the hearer. One blower in the canyon can easily affect thirty homes in each direction. Sixty homes. Seventy-five – one hundred people! Don't be unresponsive to

your neighbors needs just because you are at the office and don't experience the disruption. Remember: the next problem, you may be the one needing help.



*Cont. pg. 15*

*Facts from the Canyon Committee for  
Eradication of Gas Blowers  
Cont. from page 14*

**FICTION: Noise from leaf-blowers is not all that harmful.**

FACT: "Right to Quiet" newsletter recently stated: "When harsh noise hits, instead of reaching out to greet the world with open ears, we shrink back into shells, or try to; in truth the ears can't shut, nor like the eyes turn away. Noise controls space like an occupying army, travels through walls, enters homes, molests bodies, violates privacy, stops thought, batters each of us into isolation." Noise causes loss of community and is both a sign and a cause of aggression and violence. Gardeners themselves are reporting significant increase in deafness due to the level of noise generated by leaf blowers.

**FICTION: The leaf blowers are not a big part of pollution.**

FACT: Los Angeles, according to a very recent government report, is the number one most polluted city in America, much of it from dangerous particles in the atmosphere. The leaf blower is a major culprit blowing into the air everything from carcinogenic asbestos, the leavings on the road of brakes linings, to animal feces and precious topsoil. Emissions from the two-stroke combustion engine (a gasoline-oil mixture, thus especially toxic) include PM as well as gaseous carbon monoxide, nitrogen oxides, and hydrocarbons (CO, NOx, and HC).

**FICTION: The blowers are not really a health problem.**

FACT: According to the EPA and ARB they can increase the number and severity of asthma attacks, cause or aggravate bronchitis or other lung disease, and reduce our ability to fight infections. According to the Lung Association, a leaf blower causes as much smog as 17 cars. The Lung Association states "the lead levels are of concern due to [their] great acute toxicity... Elemental carbon...usually contains several absorbed carcinogens." Another study found arsenic, cadmium, chromium, nickel, and mercury in street dust as well. The ARB states that a leaf blower creates 2.6 pounds of PM10 dust emissions per hour of use. That's 15 - 20 pounds in the air on a typical street each day. Gas blower manuals specifically recom-

mend that every person within 50 feet of a blower wear protective eye and breathing gear, even inside the home. This is especially important for children and pets?

**FICTION: There are no alternatives to the gas-powered leaf blower.**

FACT: Cleaner air and reduced energy use is available to every gardener. The quietest lawn equipment is also the cleanest. Electric and human-powered lawn equipment tends to be 10 to 20 decibels quieter (one-half to one-fourth as loud) as the gas-powered equipment. Electric equipment is also much cleaner than the two-cycle engines that power most lawn machines. Moreover, two cycle engines are very inefficient compared to electric models. Improvements in battery technology are making electric lawn equipment a viable option; from a hand-held trimmer to a riding lawn mower, electric lawn equipment promises "greener" landscapes and "cleaner" soundscapes.

**WHAT TO DO WHEN YOU SEE A  
GAS BLOWER?**

**Call the Police Everytime!  
Call the Committee for Help:  
310.927.4057**

**FICTION: Authorities will do nothing about it.**

FACT: Police, if the resident insists, will respond with a car to the canyon. When calling police (West L.A. HQ 310.575.8404), resident must insist on a car; do not accept referral to city "leaf-blower line". Any resistance to sending a car from reception ask for watch commander. If gardener has hidden blower behind the house when police arrive (a frequent ploy) the resident must declare he or she has witnessed violation. If officers, sometimes incorrectly saying they themselves must have witnessed, refuse to cite, resident should demand a supervisor who must be sent to scene. Resident may demand a citizen's arrest of the gardener and citation. Several gardeners have been cited or arrested (they are released on their own recognizance immediately after arrest). ■

# A LIFE IN THE CANYON

By Nickie Miner



A sudden illness took BCA Boardmember, Elliott Marks' life this past summer. It's still hard to believe he's gone. Elliott's adoring wife and son, lifetime friends and new acquaintances, and colleagues from the many areas of his interests loved his company and miss him deeply.

Elliott was a brilliant photographer. He was highly respected, and known in the movie industry for his stills. He leaves a truly breathtaking legacy of photographs and projects.

He had a great talent, and both his love of life and interest in people are present in the fascinating pictures he took.

Yet Elliott could set aside the seriousness with which he lived his craft and gladly run down the road to take

a photo of our Welcome to Benedict Canyon sign for one of our newsletters.

For many years we counted on him to spruce up our Annual Meeting Signs, and to pound them into the ground up and down Benedict.

Elliott was the one who launched our Benedict Canyon website. He wasn't a computer expert but he undertook the task and did it as he did everything, extremely well.

When looking for technical advice, or for someone to roll up their sleeves and contribute some serious effort for Benedict Canyon, or merely to say Hi and shoot the breeze for a while, we'll truly miss Elliott Marks. He was a great guy. ■

## DO YOU LIVE IN YOUR OWN HOUSE?

By Julie Roswal

Verifying if Your Address as an Owner is in the City Land Records:

If land near your property is about to be developed, a hearing may be required. The City of Los Angeles, Dept. of Building & Safety, might then need to send you a Notice of a Hearing. However, you may not receive a notice because the address list that the City uses contains many old, out-of-date addresses. A person who owned your current home years ago may be the person who actually receives the notice intended for you. It is wise to make sure that your current address (based on your deed) is in the computer system of the City of Los Angeles.

To verify your address, have your Assessor's ID number when you call the following office: City of Los Angeles, City Clerk's Office, Land Records Division, 201 N. Figueroa St., Room 730, Los Angeles, CA 90012 [Phone (213) 977-6014].

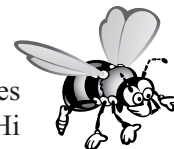
Ask a clerk to verify your name, your ID number and address. If the information is incorrect, mail a photocopy of your deed to the City Clerk's office. ■

# HISTORIC BENEDICT

By Alan Fine

How did Benedict Canyon get its name? "Benedict" comes from the Latin "benedicere" meaning literally "speak well" or "praise", eventually evolving to "Bless" hence "Benediction". Yes, many of us feel we are blessed to live in our wonderful canyon, but, like many geographical locations, it is actually named after a pioneer settler, Pierce E. Benedict, who, together with Burton Green, was one of the founders of the City of Beverly Hills.

When I moved here over 35 years ago, I was told that the old wood-shingled house on the east side of the street below Clear View Drive was the "Benedict House", still occupied by an elderly member of the family. True or not, I like to believe it.



The following is extracted from "Beverly Hills" by Genevieve Davis, published in 1988 by Windsor Publications, Inc:

Of the old timers of Beverly Hills, Pierce E. Benedict was considered foremost. In 1914, when the City of Beverly Hills was incorporated, he was elected resident of the Board of trustees and continued to serve in that capacity for eight years.

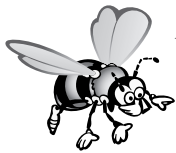
Born in Booneville, Missouri, in 1856, Pierce Benedict came out to California with his family when he was seven years old. His father took a homestead in Benedict Canyon, and Pierce later bought 230 acres of land adjacent to his

Cont. pg. 17

*HISTORIC BENEDICT*

*Cont. from page 16*

father's homestead from the Southern Pacific Railroad. He later worked both pieces of property and developed an apiary. (After a few year's work he was able to make a shipment of 45,000 pounds of honey, which he delivered by boat from the Old Santa Monica Pier. He carried on his apiary business (in Benedict Canyon) until 1923.



So, if you hear a buzzing in your backyard, say "hello!" It may be a descendant of one of Mr. Benedict's bees!

If you have any other historical facts or memories of Benedict Canyon that you would like to share with our readers, please call us at (310) 553-4BCA (4222). ■

**STORM DRAINS**

*Cont. from Pg. 12*

Association Meeting, the heavens opened and the 50 year anticipated flood of Benedict Canyon arrived. No houses, cars or trees ended up in the storm drain channel, but then neither did any of the flood water. The mud from the slide, which blocked the upper end of the canyon, flowed down with the flood water and built a wall of mud in the 1500 block, so high nothing could pass by it or through it. Residents were stranded in the canyon for three days.

When Jerrold Rudelson died on September 9, 1971 the Canyon Crier, a local newspaper, wrote about Rudelson, "He was such a man that he made a thing of beauty out of a drainage ditch, to be known henceforth as the RUDELSON ARROYO". ■



**A Lifetime of Service**

*By Sandy Margolis*

**H**arland Green, a resident of Benedict Canyon since 1964, was honored in November with the National Multiple Sclerosis Society's "Lifetime Achievement Award", at their National Conference in Miami Beach, Florida. Harland was recognized for more than 35 years of service in the fight against MS.

Harland's wife, Melva, was diagnosed with MS in her early 20's, shortly after their marriage. Harland has lent his time in the fight against MS by offering his skills as both an attorney and accountant. He joined the Southern California Chapter of the MS Society's Board of Trustees in 1965. He has served as Vice Chairman of the Board and has received awards as Outstanding Trustee (1966) and Trustee of the Year (1975).

Harland was an exemplary husband and devoted caregiver to his wife, Melva, and together they traveled the world, usually in a wheelchair.

Our BCA neighbors who attend our annual meetings, will remember them as the couple always holding hands. After a long battle with MS, Melva passed away a year ago. Harland, strengthened still by Melva's indomitable spirit, and the hope that researchers may put an end to this terrible disease, faithfully attends MS Board meetings, and continues to raise funds and represent the MS Society.

We are proud to call Harland a neighbor and friend, and a long time BCA member. All those wishing to assist Harland's continuing efforts to find a cure for MS, may send their donations to the Southern California Chapter, MS Society, 2440 S. Sepulveda Blvd., Suite 115, Los Angeles, CA 90064. ■

*Longtime Benedict Canyon residents, actor Melinda Peterson and voice-over artist and member of Firesign Theatre, Phillip Proctor, offer their own humorous perspective on Canyon Real Estate:*

**PRETENTIOUS PROPERTIES PRESENTS:**

*Canyon Ridge SuperEgo Estates - - Look Down On Everyone!  
Houses so big, they're beyond your wildest dream!!  
They'll be your neighbors' NIGHTMARE!!!*

**CHOOSE BETWEEN:**

*Retro-Pseudo-Neo Modern, Twin-Tower Tudor  
Or Moroccan Mission Position  
On Cotton Plantation or Coffee grounds  
(Choice of Italian Roast, Columbian Decal or Frappacino)  
With Plenty of Closets and More Bathrooms than Bedrooms  
All on 1 and 1/8th Acres — it's a LOT O' HOUSE!  
"It takes a village to live here - thank goodness they don't!"*

**SECURITY:**

*Gated Driveway with Satellite Navigation System Override  
Mile-High Earthquake-Proof Retaining Walls  
Deer and Coyote-Proof Ha Ha  
Uzi-Armed Security Turrets, 24-Hour Searchlights  
Shark and Agent-Stocked Moat  
Off-Grid Outage-Proof Hybrid/Hydrogen Cell Power Plant*

**RECREATION:**

*Bomb Shelter/Disco (Events Planner on Premises)  
Private Gym and Pilates Dungeon/Disco  
Tennis/Racquetball /Bowling/ Video Game Arcade  
And Water Park/Disco  
Super Cannes-Sized Swimming Pool for Yachting and Water-Skiing  
Filtered Fiji-Water Spa and "I'm Hot" Tub (C)  
Pedigreed Dog Run and Bridal Path  
Chapel/Mosque/Temple/Meditation Room/ATM  
99-seat SAG Waver Imax (C) Screening Room  
With You're Surrounded (C) Sound System  
Four-level Garage for Stretches, Humvees, SUVs and WMDs  
Members Only Golf Course (Pro on Premises)  
Skeet, Crow and Gas-Meter Reader Shooting Range  
Indoor/Outdoor Mud Bath and Love Pitt (C)  
Hawaiian/Aztec BBQ with Poo-Poo Patio and Sacrificial Lanai  
Chumash Indian Gambling Casino (the House Always Wins!)  
Endangered Stuffed Bird Sanctuary  
Slaughterhouse and Tanning Room*

**STAFF:**

*Lawyers' Guest House adjacent to Your Manager's Cell  
Separate Illegal Alien Slave Quarters With Half-Bath  
Zagat(C) A-List Restaurant with Power Booths, Maitre D', Sommelier, and Wolfgang Puck (C)  
Private Runway and 1-Helo-Pad (Air Controllers Extra)*

**PRICED TO SELL AT FREE-RANGE MARKET VALUE:**

*(Dependent on Weekend Box Office Grosses)  
No Has beens, Toast or Paupers, Please!!*

**CONTACT: PROCTOR/PETERSON PROPERTIES**

**FAX: 310.555.1212**

*Just One Sale, and Away we Sail*

# MAIL THEFT PREVENTION TIPS



1. DO NOT leave outgoing mail in your unlocked mailbox. DO deposit mail in a blue collection box or inside at your local post office. Use a collection box that is NOT FULL!
2. Promptly pick up your incoming mail once it is delivered to your box.
3. Purchase a locked mailbox or convert your unlocked box to the lockable type. (Look in the telephone directory yellow pages under "Mail Boxes Retail.") On your locked box, make sure the mail slot is large enough and safe enough for the letter carrier to insert your mail.
4. Arrange for your mail to be delivered to a Post Office Box for a small fee.
5. Consider having regular income checks deposited electronically right into your bank account via Direct Deposit. It's easy and, in most cases, it's free! Contact your bank for details.
6. In case your mail is stolen (from your mailbox, from a blue collection box, or from a postal vehicle), to avoid fraudulent use of

your checking account - Be sure to do the following:

- a. When writing checks to pay your bills - Write out in full the "payee" and "memo" portions. Fill up the entire lines with letters or a squiggly line.
  - b. Use thick, dark ink (not felt pen) to write your checks.
  - c. Purchase checks through institutions that use tamper-resistant paper and ink.
7. Be observant of activities on your street.
  8. IMMEDIATELY report any suspicious persons or activity by calling 9-1-1 while suspects are still present! Remember, do not jeopardize your safety but BE A GOOD WITNESS
  9. The Postal Service pays rewards up to \$10,000 for information and services leading to the arrest and conviction of mail thieves. Report suspicious activities and information to Postal Inspectors, 24 hours a day, at 818-405-1200.
  10. Point your camcorder in the direction of your mailbox to record thieves on film.
  11. Promptly report nonreceipt of credit cards, checks, and other valuable mail to the senders.
  12. Immediately notify the post office and mailers if you change your address. If you are going on vacation, notify the post office or have a trusted friend or neighbor pick up your mail promptly after delivery.
  13. Join a Neighborhood Watch Program.
  14. Thank you for your efforts at crime prevention! ■

"THE ROAD LESS TRAVELLED"  
Cont. from Pg. 11

**BUREAU OF ENGINEERING**  
Kendrick Okuda, Group Manager  
Vahik Vartanians, Project Manager  
Anthony Muóoz, Project Construction Manager  
Rafael Villegas, Project Liaison  
**BUREAU OF STREET SERVICES**  
Ronald R. Olive, Division Engineer  
Yalin Tam, Project Engineer  
**DEPT. OF WATER AND POWER, WATER SYSTEMS**  
Michael Downs, P.E., Western District Engineer  
Shahram Fadakar, Water Distribution  
**STORM DRAIN CONTRACTOR:**  
Mike Prlich & Sons Inc. Michael A. Prlich  
For more information on this project, please call Project Liaison, Rafael Villegas at (213) 847-5051. ■

## Benedict Canyon

### Benedict Canyon Association Board of Directors

#### EXECUTIVE COMMITTEE

Barbara Nichols	President
Vera Dunn	Vice President
Rodney Kemerer	Vice President
Sandy Margolis	Vice President
Michael Chasteen	Vice President
Jolyn Rudelson	Secretary
Alan Fine	Treasurer

#### ADMINISTRATIVE ASSISTANT Claire Carafello

#### ADVISORS

David Elson — Legal  
Sheila Morris, CPA — Accounting  
Michael Vignieri — Land Use

#### MEMBERS-AT-LARGE

Steven Berck	Nickie Miner
Joshua Berman	Mark Montgomery
Babette Bloomgarden	Mary Ann Musico
Marcy Braiker	Arleen Ruby Leviton
Robert Cohen	Kathryn Scott
Chapin Hunt, Jr.	Linda Shokrian
Don Loze	Gordon Smith
Geoff Miller	Marilyn Stefano

#### NEWSLETTER COMMITTEE

Rodney Kemerer — Editor	
Sandy Margolis	Vera Dunn
Kathryn Scott Miller	Linda Shokrian
Barbara Marcus	
Aron Kincaid — Artwork	
Ben Martin — Photography	

# HELP PROTECT BENEDICT CANYON



## BECOME A BCA MEMBER

-DETAILS INSIDE THIS ISSUE-



Protect yourself, your neighbors and  
your community.

BRUSH CLEARING is a  
year round responsibility.

Make sure you are “fire safe” this season.



### HAVE A ‘SAFE’ SUMMER IN THE CANYON.

  
Benedict Canyon

Benedict Canyon Association  
P.O. Box 1265  
Beverly Hills, CA 90213-1265

PRSR FIRST CLASS  
U.S. POSTAGE  
**PAID**  
BEVERLY HILLS, CA  
PERMIT NO. 1719

Deliver to Addressee  
or to Current Resident